

MAP PRODUCED IN PARTNERSHIP BY:



Hike Your Way to Good Health!

People of all ages can improve their health through physical activity.

Physical Activity can help to:

- Control Weight
- Control High Blood Pressure
- Reduce Risk for Type 2 Diabetes
- Reduce Symptoms of Depression & Anxiety
- Reduce Arthritis Pain

This work is funded in whole or in part by a grant awarded by the Ohio Department of Health, Bureau of Healthy Ohio, Preventing Obesity, Diabetes, and Heart Disease, and Stroke in Ohio Communities and as a sub-award of a grant issued by Ohio Department of Health under the Prevention and public health fund, and CFDA number (93.757).



CLEAR FORK VALLEY Scenic Trail



NCOLC Trail Photography by: Ryan Schumann



BROUGHT TO YOU BY:

North Central Ohio Land Conservancy

13 Park Avenue West, Suite 608 • Mansfield, OH 44902 • 419-522-6262

Trail History

The goal of North Central Ohio Land Conservancy (NCOLC) has always been to identify and protect the most ecologically special areas in Richland and surrounding counties. When the areas surrounding today's trail became available for protection, the thought of connecting them with a trail became irresistible. Knowing that one of the greatest tools for environmental protection is public support and love of the land, the idea was born to connect Butler (and the B&O Bike Trail) to Malabar Farm State Park and Mohican State Park. This new connection would increase access to Malabar Farm and Mohican, further influencing their continued protection. By walking our trail, you can observe how we protect our nature preserves and you are welcome to tell us how we can do better.

www.facebook.com/NCOLC/



Guidelines/Rules/Regulations

Walking Only

The Clear Fork Valley Scenic Trail was created for hiking only. In order to protect rare plants along the trail, we do not allow bicycles, horses, or any type of vehicle. Your cooperation will allow the continued preservation of these primitive lands.

Stay on the Trail

The Clear Fork Valley Scenic Trail shares borders with many private landowners. This fact, combined with the delicate characteristics of the surrounding plants, make it incredibly important for all hikers to stay on the marked trail.

Parking

You may access the trail and all its features by parking ONLY at our two designated parking areas:

1. THE CLEAR FORK RESORT at the end of Resort Drive.
2. THE NEWVILLE BRIDGE on Pleasant Hill Road.

Please DO NOT park on roads along the trail corridor. Parking on roads may create a hazard for hikers and drivers or may violate private property rights!

Pets

Dogs are allowed on the Clear Fork Valley Scenic Trail ONLY while leashed by a responsible pet owner. Loose pets disturb nesting birds and the habitat of other animals we strive to protect.

To Newville Bridge parking area (2.5 miles)
 - At park entrance, turn RIGHT onto Pleasant Valley Rd
 - Follow Pleasant Valley Rd 0.9 mile to S.R. 603
 - RIGHT on S.R. 603, follow 0.4 mile to S.R. 95
 - RIGHT on S.R. 95, follow 1.1 mile to Pleasant Hill Rd
 - LEFT onto Pleasant Hill Rd, follow less than 0.1 mile to parking area on your Left. Watch for the kiosk.

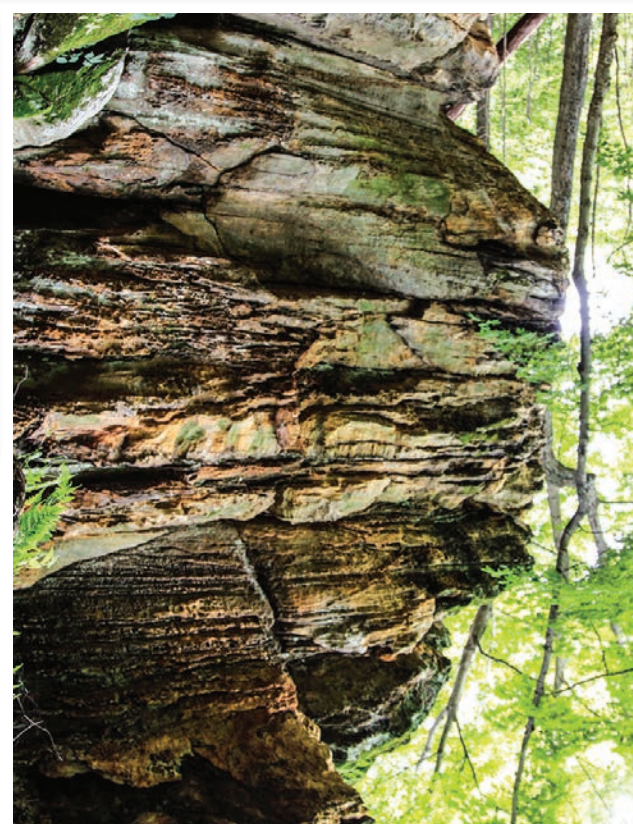
Directions from Mohican State Park
To Clear Fork Resort parking area (9.3 miles)
 - At end of 1.5 mile Lodge entrance road, turn RIGHT onto Goon Rd
 - Follow Goon Rd 0.6 mile to McCurdy Rd
 - RIGHT on McCurdy Rd, follow 0.7 mile to Pleasant Hill Rd
 - LEFT on Pleasant Hill Rd, follow 2.1 miles to parking area on your Right by bridge. Watch for the kiosk.

Directions from Clear Fork Resort
To Newville Bridge parking area (4.1 miles)
 - Follow Resort Dr 0.6 mile from parking lot entrance to S.R. 95
 - RIGHT on S.R. 95, follow 3.5 miles to Pleasant Hill Rd
 - RIGHT onto Pleasant Hill Rd, follow less than 0.1 mile to parking area on your Left. Watch for the kiosk.

Directions from I-71
To Clear Fork Resort parking area (9.3 miles)
 - Exit I-71 onto S.R. 97 - follow S.R. 97 south 0.9 mile to Spayde Rd
 - LEFT on Spayde Rd, follow 1.0 mile to S.R. 13
 - RIGHT on S.R. 13, follow 1.0 mile to S.R. 97
 - LEFT on S.R. 97, follow 5.5 miles to Traxler St in Butler
 - LEFT on Traxler St, follow 0.2 mile to S.R. 95
 - RIGHT on S.R. 95, follow 0.1 mile to Resort Dr
 - LEFT on Resort Dr, follow 0.6 mile to parking lot entrance
 - Trail User parking is on your Left along the wooden fence. Watch for the kiosk.

To Newville Bridge parking area (9.9 miles)
 - Exit I-71 onto S.R. 13 - at the interchange, look for signs to Opossum Run Rd (the first stop light just south of I-71
 - At the light at the Wal-mart entrance, turn RIGHT onto Opossum Run Rd
 - Follow Opossum Run Rd 9.6 miles to S.R. 95
 - LEFT onto S.R. 95, follow 0.1 mile to Pleasant Hill Rd
 - RIGHT onto Pleasant Hill Rd, follow less than 0.1 mile to parking area on your Left. Watch for the kiosk.

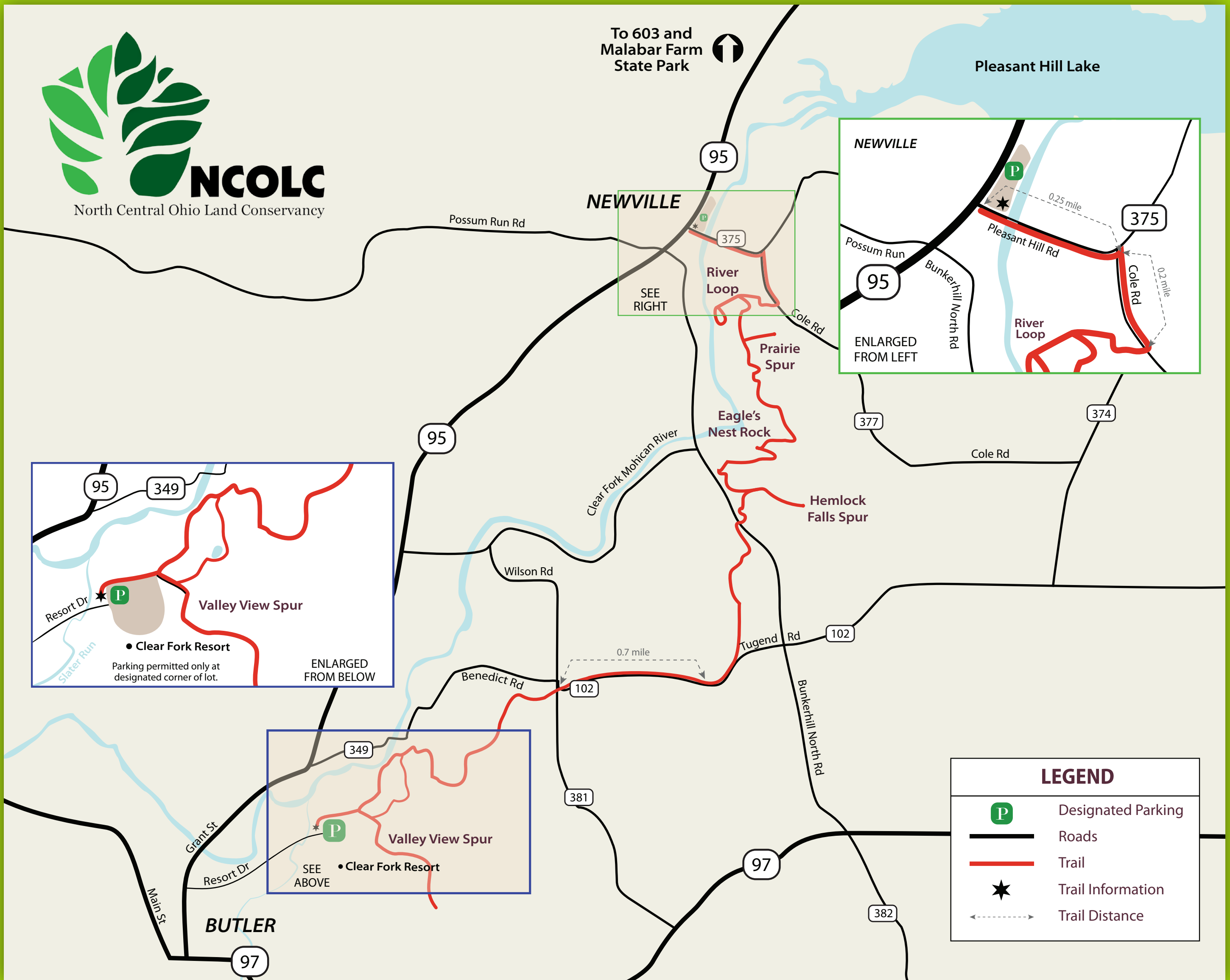
Directions from Malabar Farm State Park
To Clear Fork Resort parking area (6.5 miles)
 - At park entrance, turn RIGHT onto Pleasant Valley Rd
 - Follow Pleasant Valley Rd 0.9 mile to S.R. 603
 - RIGHT on S.R. 603, follow 0.4 mile to S.R. 95
 - RIGHT on S.R. 95, follow 4.6 miles to Resort Dr in Butler
 - LEFT on Resort Dr, follow 0.6 mile to parking lot entrance
 - Trail User parking is on your Left along the wooden fence. Watch for the kiosk.





To 603 and Malabar Farm State Park ↑

Pleasant Hill Lake



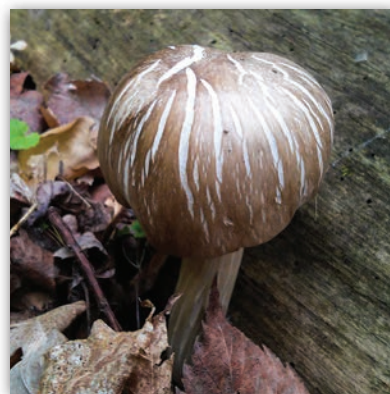
North Central Ohio Land Conservancy

The North Central Ohio Land Conservancy, Inc. (NCOLC) is a nonprofit organization dedicated to safeguarding natural areas in Ohio for the enjoyment of current and future generations. NCOLC manages approximately 1,700 acres and all lands are open for public use.

By identifying and acquiring lands of significant ecological value, NCOLC ensures their protection from detrimental development by recording permanent conservation easements.

To ensure that our nature preserves are entrusted to responsible future generations, NCOLC works closely with those who educate youth in the values of conservation.

In collaboration with local partners, NCOLC has established the Clear Fork Valley Scenic Trail. Through a corridor of natural preserves, our trail connects Malabar Farm with the Richland B&O Bike Trail in Butler.



Trail Features

A through-hiker of the Clear Fork Valley Scenic Trail is likely to see a new natural treasure with every visit. Some of the staples include; old growth forest, elevated views of the Clear Fork Valley, constructed prairie lands, a spring-fed waterfall, rare flora, raptors, Black Hand sandstone outcroppings, and a walk along the Clear Fork River.